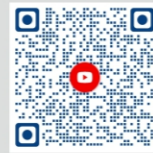
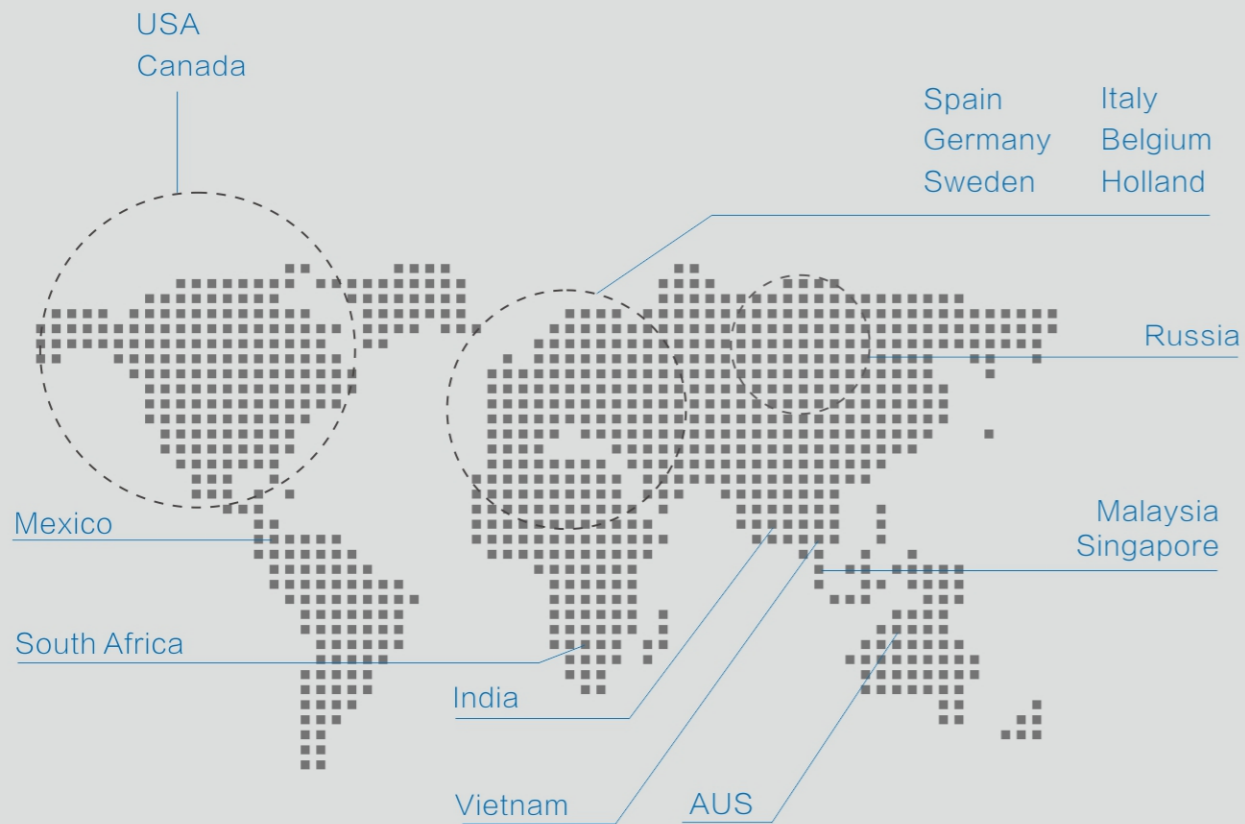




LinkedIn



Youtube



Website : www.ds-smt.com

E-mail: marketing@desen-sz.com / service@desen-sz.com

Telephone: +86 18617023102 / +86 400 877 5520

Company: Shenzhen Desen Precision Machine Co., Ltd

Address: Building A4, The 3rd Industrial Zone in Tantou, Songgang Street, Tantou, Baoan District, Shenzhen City, Guangdong Province, China.

DESEN

FULLY AUTOMATIC STENCIL PRINTER

DGL series

DGL-F



Process Parameters		Specification
Ⓢ	Printing Accuracy	$\pm 30 \mu m @ 6\sigma$, $Cpk \geq 2.0$
Ⓢ	Repeat Position Accuracy	$\pm 15 \mu m @ 6\sigma$, $Cpk \geq 2.0$
		Verified by the test system CeTaQ
Ⓢ	Cycle Time	12s
Ⓢ	Screen Frame Size	737mm x 300mm~ 1800mm x 737mm
Ⓢ	Screen Frame Thickness	20mm -40mm
Ⓢ	Substrate Size (minimum)	80mm (X) x 50mm (Y)
Ⓢ	Substrate Size (maximum)	1500mm (X) x 510mm (Y)
Ⓢ	Substrate Thickness	0.4mm - 6mm
Ⓢ	Print Pressure	0kg-20kg
Ⓢ	Print Speed	6mm/sec - 120mm/sec
Ⓢ	Print Gap	0mm -20mm
Ⓢ	Substrate Separation	Speed:0.1 - 20mm/s Distance:0mm - 30mm
Ⓢ	Apply Paste Option	Solder paste, printing ink, silver paste

Transportation System		Specification
Ⓢ	Substrate Weight (maximum)	$\leq 15kg$
Ⓢ	Transport Speed	Segmented control, 1200mm/s (Max)
Ⓢ	Board Height	$\leq 10mm$ (Customizable)
Ⓢ	Transport Height	$900 \pm 40mm$

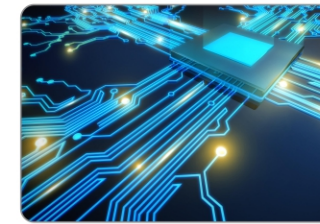
Electrical Configuration & Environmental Requirement		Specification
Ⓢ	Voltage	220Volts +/-10%.Single phase 50/60Hz
Ⓢ	Power	3kw
Ⓢ	Air Supply	4.5-6kgf/cm ²
Ⓢ	Temperature	-20°C ~ +45°C
Ⓢ	Humidity	30% - 70% relative humidity

Standard Configuration		Specification
Ⓢ	Automatic Platform Calibration System	The platform height is automatically calibrated according to the thickness of the substrate.
Ⓢ	Substrate Support Positioning System	Flexible side clamp ,Support block ,Manual clamp
Ⓢ	Intelligent Transportation System	The automatic stopping device + automatic substrate positioning + left in left out, left in right out, right in right out, right in left out.
Ⓢ	Stencil Bottom Cleaning	Drop cleaning, largest size 510mm
Ⓢ	Handing & Cleaning Options	Wet cleaning + dry cleaning (free combination)
Ⓢ	Approximate Dimension	2600 (L) X 1405 (W) X 1565 (H) mm
Ⓢ	Approximate Weight	2000kg packaged (depend upon configured options selected with machine)
		1800kg unpackaged (depend upon configured options selected with machine)

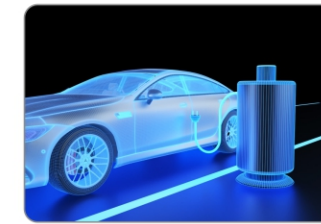
Range of Application



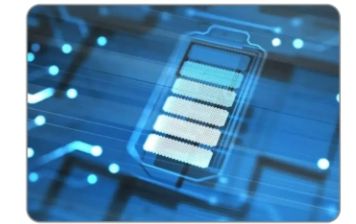
5G



Semiconductor



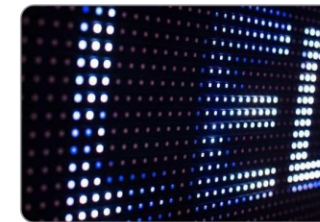
New Energy



Power Battery



Photovoltaic Products



New Display



Automotive Electronics



Medical Instruments

Product Size

