

国内办事处/服务点

苏州

苏州市高新区创业街60号创捷科技园E栋E506,508室
邮编:215129 TEL:(0512)68702170/71 FAX:(0512)68702173
E-mail:suzhou@jt-ele.com

上海

上海市闵行区申南路59号凯龙华庄商务园6号楼102&103室
邮编:201108 TEL:(021)64325281 FAX:(022)64326846
E-mail:shanghai@jt-ele.com

杭州

浙江省杭州市萧山区市心北路170号宁安大厦2栋1004室
邮编:310009 TEL:(0571)86518105 FAX:(0571)86516005

天津

天津市津南区八里台碧桂园映月庭院11栋1604室
邮编:300350 TEL:(022)58658949 FAX:(022)88653833
E-mail:tianjin@jt-ele.com jt-tianjin@163.com

合肥

安徽省合肥市瑶海区和平路纺织二村45栋610室
邮编:230000 TEL:13866757541
E-mail:zmx@jt-ele.com

郑州

河南省郑州市荥阳市荥泽大道演武路刘村社区58号楼二单元902
邮编:450100 TEL:15617869879

成都

四川省成都市高新西区尚雅路8号
邮编:610021 TEL:15086838858
E-mail:chengdu@jt-ele.com

重庆

重庆市大渡口区双龙路2号中交丽景小区
TEL:17502368184
E-mail:lrz@jt-ele.com

厦门

厦门市集美区东安前占里19-1号
邮编:361022 TEL:(0592)6158972 FAX:(0592)6223742
服务电话:13950049854/13799776594

青岛

山东省青岛市黄岛区灵山卫街道珠光路76号
TEL:13395325223
E-mail:kfs@jt-ele.com

SELECTIVE SOLDERING

选择性焊接设备

PRODUCT BROCHURE

JT 劲拓股份

深圳市劲拓自动化设备股份有限公司
SHENZHEN JT AUTOMATION EQUIPMENT CO., LTD.

劲拓自动化工业园:
JT Automation Industrial Park
深圳市宝安区航城街道鹤洲工业区北八路劲拓自动化工业园
JT Industrial Park, Beiba Rd., Hezhou Industrial Zone, Hangcheng, Baoan, Shenzhen

劲拓光电产业园:
JT Opto-Electronics Industrial Park
深圳市宝安区石岩街道水田社区石岩外环路劲拓光电产业园
JT Opto-electronics Industrial Park, ShiYanWaiHuanRd., ShuiTian, ShiYan, BaoAn, ShenZhen.
TEL (0755) 2958 6211 FAX: (0755) 29586336 E-mail:Shenzhen@jt-ele.com



公众号



www.jt-ele.com

深圳市劲拓自动化设备股份有限公司
SHENZHEN JT AUTOMATION EQUIPMENT CO., LTD.

专注 持久 分享
Concentration Persistence Sharing

JT选择性波峰焊

JT Selective Wave Soldering



选择性波峰焊满足了如今高标准焊接性能的需求,体现焊接工艺的灵活性和扩展性;第三代JT在线式选择性波峰焊,新的创新功能适用于未来需求;模块系统具有多种配置的可能性,理想的情况下可以满足各种需求定制。

Selective wave soldering meets the current demand for high standard welding performance, reflecting the flexibility and scalability of the welding process; The third generation JT online selective wave soldering, with new innovative features suitable for future needs; Modular systems have multiple configuration possibilities and can ideally be customized to meet various needs.

□ 产品特点

Product features

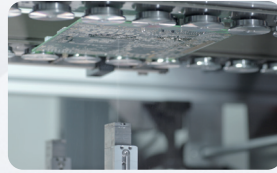
- PCB最大尺寸: 700 x 610 mm;
- 精密选择性松香喷雾系统;
- 热功率对流预热模式;
- 双缸电磁泵Z轴异步控制系统;
- 锡波液位及高度监测系统;
- 焊接过程可视化;
- 制程数据上传、监控、MES系统。
- Maximum PCB size: 500 x 450 mm;
- Precision selective rosin spray system;
- Thermal power convection preheating mode;
- Z-axis asynchronous control system of dual pot electromagnetic pump;
- Tin wave level and height monitoring system;
- Welding process visualization;
- Process data upload, monitoring, MES system.



多焊接扩展一体机
Multi-welding expansion all-in-one machine

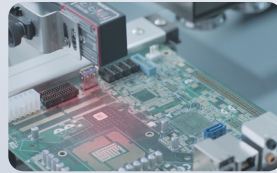
□ 喷雾模块系统
Spray module system

- 精准喷涂系统
- Precision spraying system



□ 条码枪选配模块
Barcode gun optional module

- 扫码上传焊接数据、扫描切换程序、零缺陷修复系统中作为身份识别功能
- Scan code to upload welding data, scan switching program, and use it as an identity recognition function in the zero defect repair system



□ XY轴喷雾模块平台
XY axis spray module platform

- XY轴伺服控制系统
- XY axis servo control system



□ 预热模块系统
Preheating module system

- 底部动态预热
- Dynamic preheating at the bottom



□ XYZ轴焊接模块平台
XYZ axis welding module platform



□ 预热区热风预热
Preheating zone hot air preheating



□ 焊接区顶部预热
Solder area top preheating

- NIS标配/EIS选配
- NIS standard/EIS optional

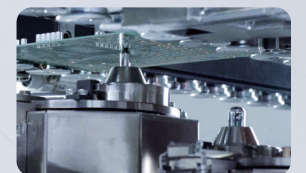
□ 运输模块系统
Transport module system

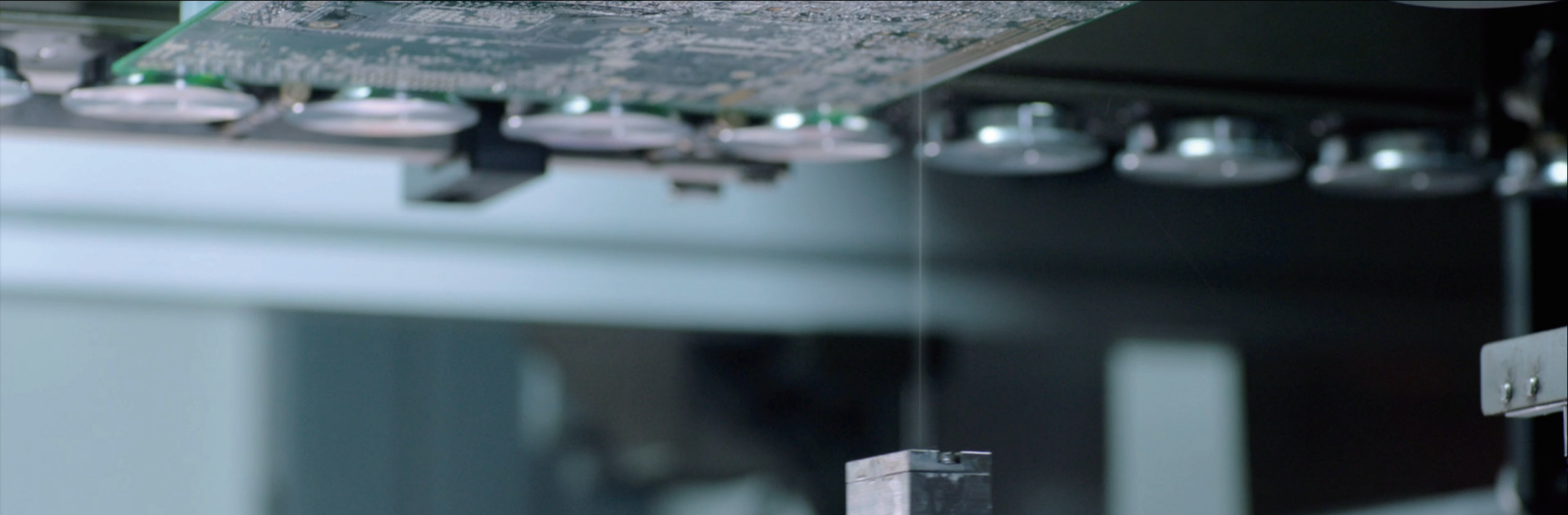
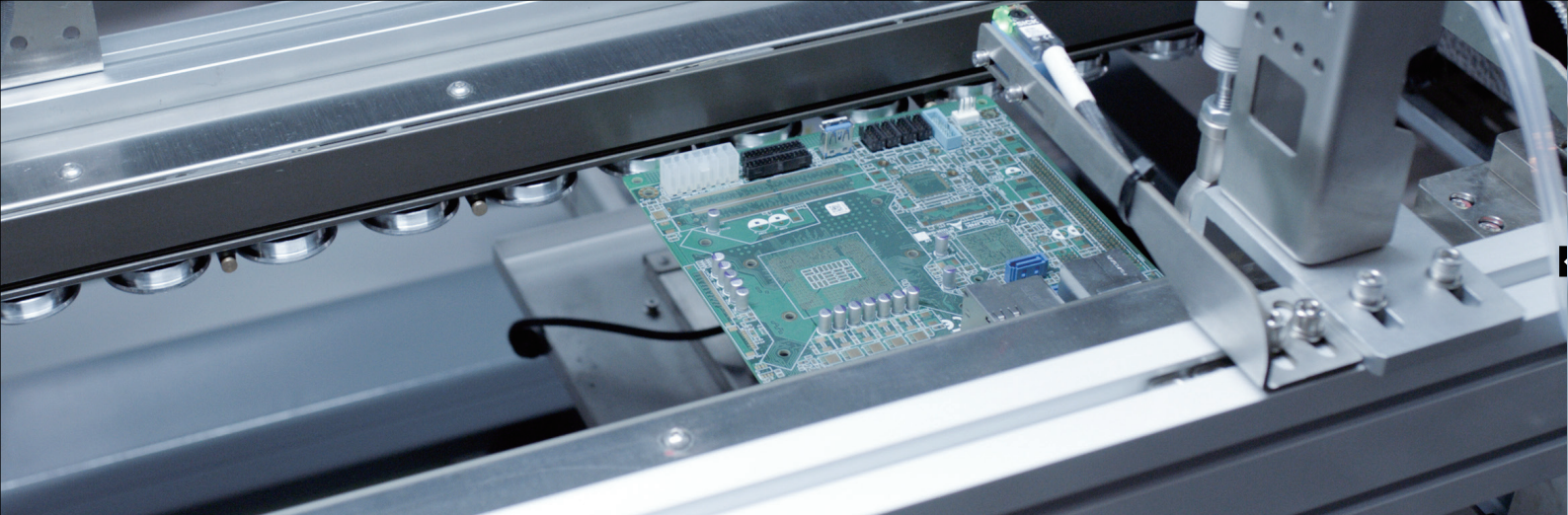
- 分段运输控制系统
- Segmented transportation control system



□ 焊接模块系统
Soldering module system

- 电磁泵控制系统
- Electromagnetic pump control system





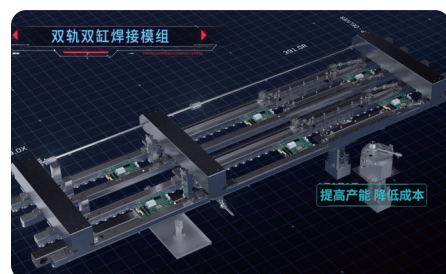
运输模块系统 Transport Module System

选择性波峰焊运输系统配置链条加滚轮式传动和全转盘运输,分段控制运输系统;统一调宽控制系统,能够更好的适用裸板和治具的应用;轨道宽度通过软件自动控制,最大满足700 x 610mm的各种尺寸PCB板生产;可选择双轨运输系统,满足裸板双拼的同时焊接。

The selective wave soldering transportation system is equipped with chain and roller type transmission and full turntable transportation, with segmented control transportation system; The unified width adjustment control system can be better applied to the application of bare plates and fixtures; The track width is automatically controlled by software, which can meet the maximum production requirements of various sizes of PCB boards of 700 x 610mm; A dual track transportation system can be selected to meet the requirements of welding bare plates simultaneously.

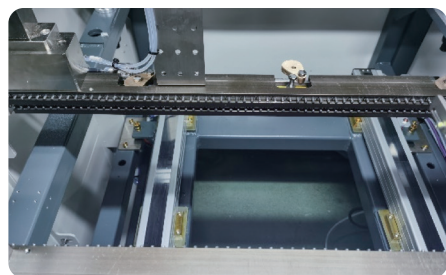
产品特点 Product features

- 高精密丝杆调宽
- EIS系列选择焊采用链条+转盘组合的运输方式,适合裸板焊接
- NIS系列选择焊采用全转盘运输方式,适合治具焊接
- 重载选项: Max. 30 kg
- High precision screw width adjustment
- The EIS series adopts a combination of chain and rotary table transportation method for welding, suitable for bare plate welding
- The NIS series selection welding adopts a full rotary table transportation method, suitable for fixture welding
- Overload option: Max. 30 kg

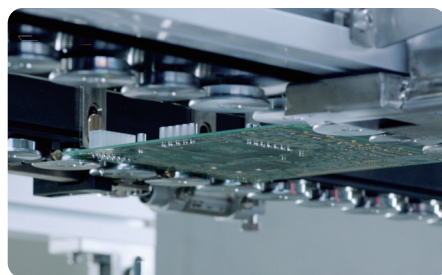


双轨双缸焊接模组
Double rail and double cylinder soldering module

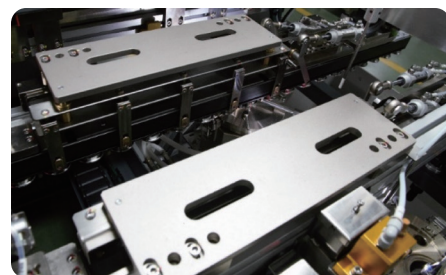
相关硬件 Related hardware



链条式运输
Chain transportation



转盘式运输
Roller transportation



XYZ夹紧
XYZ clamping

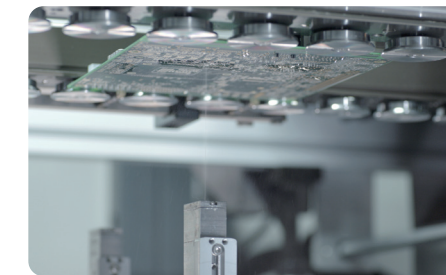
喷雾模块系统 Spray Module System

选择性波峰焊在松香喷雾模组可以配置2个独立喷雾模块;可以满足产品喷雾时间及松香类型的应用;具有喷雾测试功能和流量水平监测的精密喷雾通量系统。

Two independent spray modules can be configured for selective wave soldering in rosin spray module; It can meet the application of product spray time and rosin type; Precise spray flux system with spray test function and flow level monitoring.

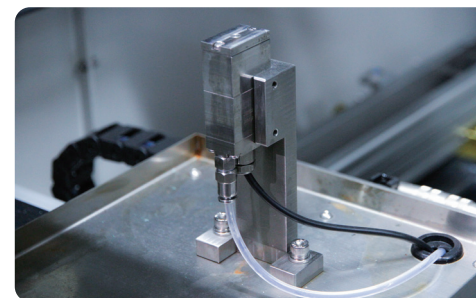
产品特点 Product features

- XY轴伺服马达驱动控制系统
- 喷雾宽度: 2~8 mm (直径 130 μ m 喷嘴)
- 优异的焊后PCB板洁净度
- 节约95%以上助焊剂
- 精准的助焊剂用量控制
- 可编程点喷和线喷
- 选项: 松香堵塞检测
- XY axis servo motor drive control system
- Spray width: 2~8 mm (diameter 130 μ M nozzle)
- Excellent PCB board cleanliness after welding
- Save over 95% of welding flux
- Accurate flux usage
- Programmable point spray and line spray
- Option: rosin blockage detection

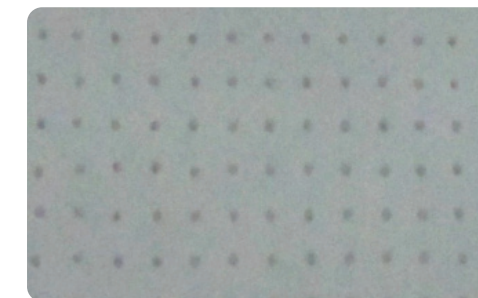


高精度助焊剂喷涂
High precision flux spraying

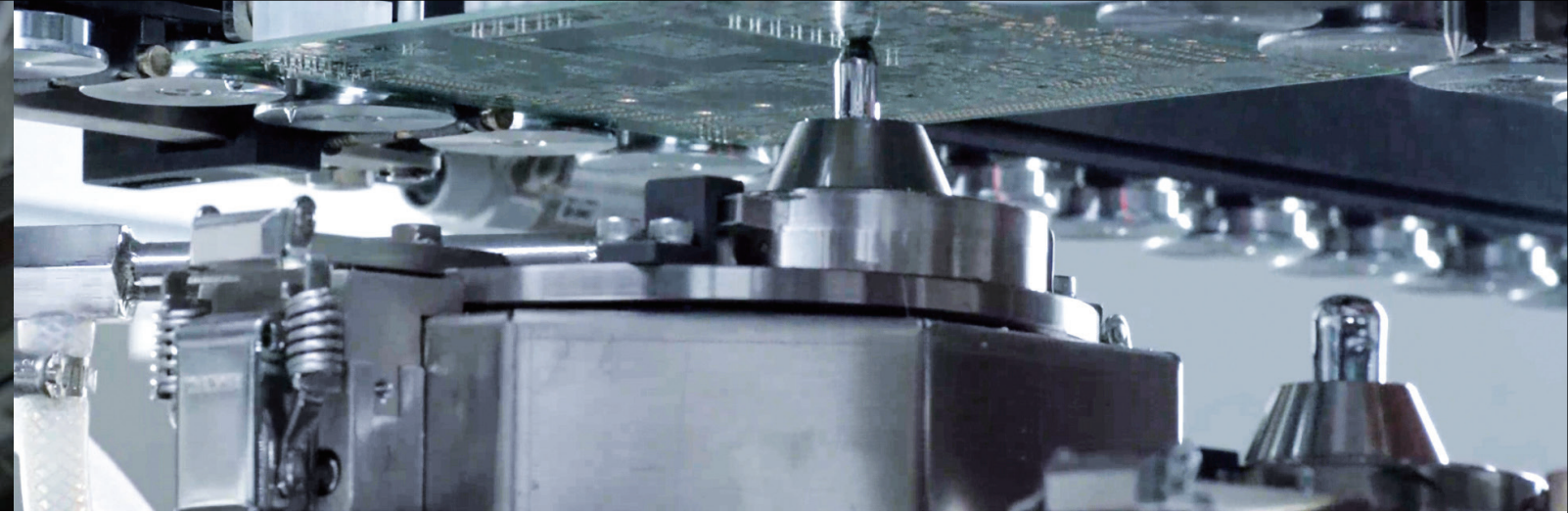
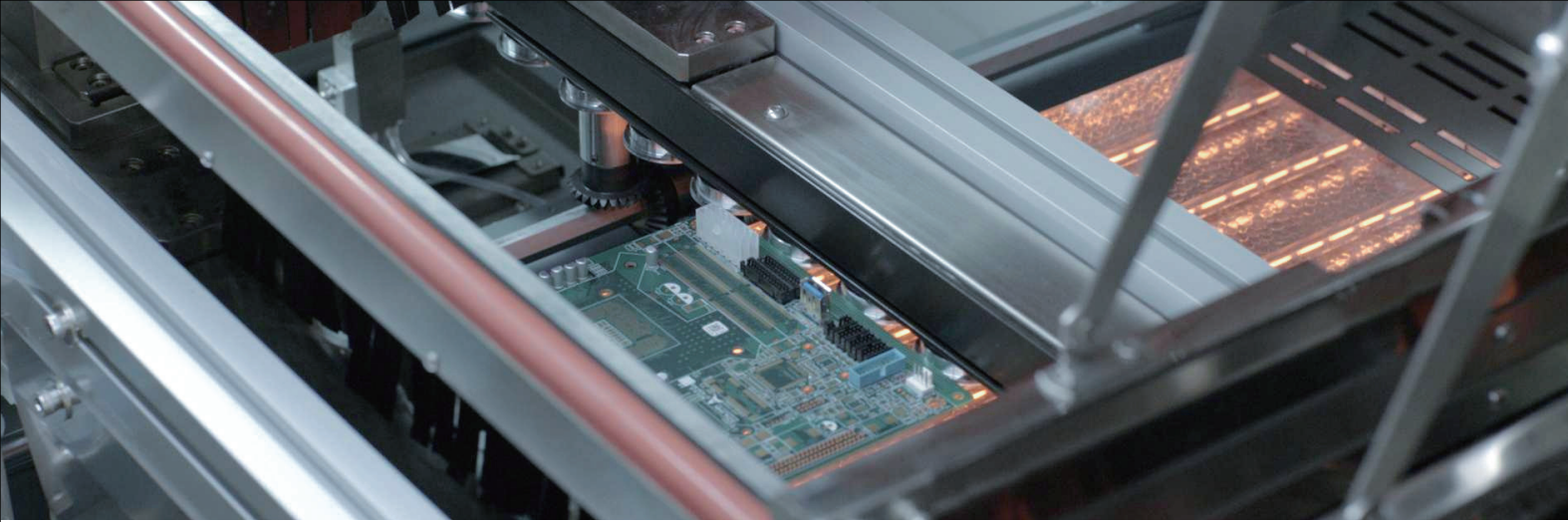
相关硬件 Related hardware



高精度脉冲喷雾系统
High precision pulse spray system



热敏纸喷雾效果展示
Thermal paper spray effect display



🔥 预热模块系统

Preheating Module System

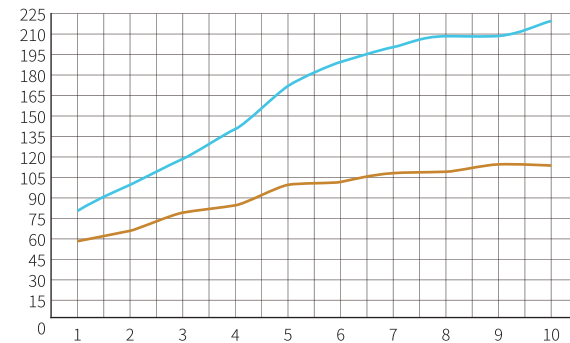
预热模组主要配置顶部热风和底部红外线发热器外;对于PTH复杂工艺PCB还配置功率加热模式;以确保高效、安全和均匀的加热效果。

The preheating module is mainly equipped with top hot air and bottom infrared heater; For PTH complex process PCB, power heating mode is also configured; To ensure efficient, safe and uniform heating effect.

□ 产品特点

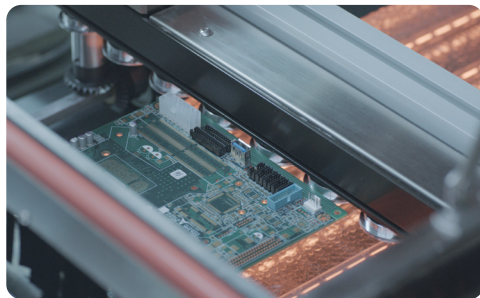
Product features

- 底部红外线预热
- 顶部热风对流预热
- 高效加热, 迅速加热PCB板;
- 底部动态预热和顶部热风预热组合, 预热区分段控制系统发挥最大的能效比
- Bottom infrared preheating
- Top hot air convection preheating
- Efficient heating, rapid heating of PCB boards
- The combination of bottom dynamic preheating and top hot air preheating maximizes the energy efficiency of the preheating zone segmented control system



□ 相关硬件

Related hardware



底部红外线预热
Bottom infrared preheating



顶部热风对流预热
Top hot air convection preheating

🔧 焊接模块系统

Welding Module System

焊接模组采用电磁泵驱动方式;选择性波峰焊最多可以配置3焊接模块;每个模块配置双锡缸对应更大产能需求。

The welding module is driven by an electromagnetic pump; Selective wave soldering can be configured with up to 3 welding modules; Each module is equipped with dual tin cylinders corresponding to larger production capacity requirements.

□ 产品特点

Product features

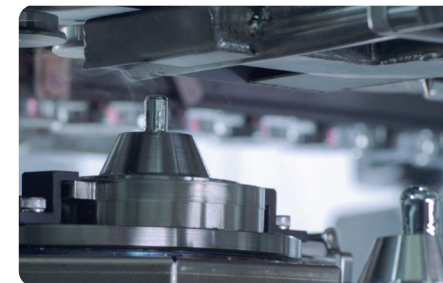
- 电磁驱动控制波峰系统, 稳定的波峰状态
- X/Y/Z 3轴伺服控制系统, 可靠的定位精度
- 定制化锡嘴, 满足不同客户的定制化需求和工艺标准
- 氮气保护, 保证焊接持久可靠
- Electromagnetic drive control peak system, stable peak state;
- X/Y/Z 3-axis servo control system, reliable positioning accuracy;
- Customized solder tips to meet the customized needs and process standards of different customers;
- Nitrogen protection ensures durable and reliable welding.



双缸独立电磁泵选择性波峰
Double-cylinder independent electromagnetic pump selective crest

□ 相关硬件

Related hardware



自动清洗喷嘴 (选项)
Automatic cleaning nozzle (option)



波峰自动校正 (标准)
Automatic crest correction (standard)



自动加锡 (选项)
Automatic wire feeder (option)

软件编程系统 Practical Device Hardware

新软件界面在编程方面也更加便捷, 参数和工艺图像一目了然, 为每个单独的焊接工艺提供最佳控制。

The new software interface is also more convenient in programming, The parameters and process images are clear at a glance, providing the best control for each individual welding process.

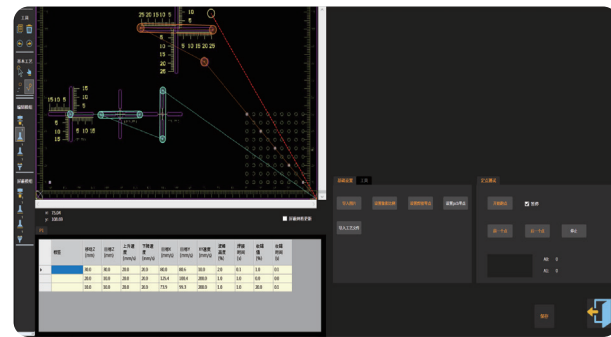
产品特点

Product features

- 灵活的编程方式 (图片、Gerber)
- Mark 相机编程 (选项)
- 人性化的操作系统
- 工艺参数灵活性
- 智能化控制模块 (选配)
- 实现焊接程序精准控制
- Flexible programming methods (pictures, Gerber)
- Mark camera programming (option)
- Humanized operating system
- Flexibility of process parameters
- Intelligent control module (optional)
- Achieve precise control of welding procedures



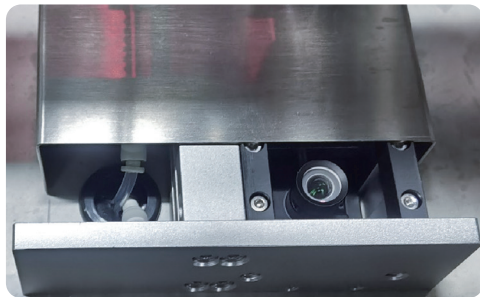
智能化控制平台
Intelligent control platform



灵活的编程界面
Flexible programming interface

相关硬件

Related hardware



编程相机
Programming Camera



Mark相机
Mark camera

设备结构 Practical Device Hardware

模块化设备组合, 满足客户产能需求。

Modular equipment combination to meet customer capacity requirements.



单头喷雾
Single spray nozzle



双头喷雾
Double spray nozzle



预热模组
Preheating module



单缸焊接
Single soldering pot



双缸焊接(单平台模组)
Double soldering pot
(single platform module)



双缸焊接(双平台模组)
Double soldering pot
(double platform module)

EIS系列选择性波峰焊参数

EIS Series Selective Wave Soldering Parameters

型号	Model	EIS-450	EIS-610
外型尺寸	Dimension (L×W×H)	2600×1800×1650mm	3350×1950×1650mm
颜色	Colour	波纹白/菊纹灰 Corrugated White/Chrysanthemum Grey	
PCB运输方向	PCB transportation direction	左向右 Left to Right (选项 Option: 右向左 Right to Left)	
重量	Weight	1500kg	2200kg
控制系统 Control System			
电源	Power Supply	3P5W, 380VAC 50/60Hz	
总功率	Consumption	29KW / 44A	38KW / 58A
控制方式	Control mode	PC+PLC	
PC操作系统	PC Operating System	Windows 10	
远程可视化	Process Visualization	CCD 可视 visibility	
软件语言	Software Language	中英文切换 Switching between Chinese and English	
数据导入	Data Import	支持制程数据上传 Support process data upload (选项 Option: 配置条码枪 configure barcode gun)	
编程方式	Programming Mode	在线/离线编程 Online/offline programming	
编程类型	Programming Type	Gerber; 图像编程 Image programming (选项 Option: 配置编程相机 Configure programmed cameras)	
传输系统 Transmission system			
传送带离地高度	Height of conveyor belt	900±20mm	
PCB运输角度	PCB transportation angle	0°	
传送带速度	Conveyor speed	0.2-10m/min	
托盘/PCB重量	PCB Weight	Max:8kg	
PCB宽度(单轨)	PCB Width (Monorail)	60-450mm	60-610mm
PCB长度	PCB Length	120-500mm	120-700mm
PCB顶部空间	PCB Top Space	120mm	
PCB底部空间	PCB Bottom Space	Max:60mm	
PCB厚度	PCB thickness	0.5-3.0mm	
PCB工艺边	PCB Edge Size	≥4mm	
PCB Pin 脚间距	PCB Pin Pin Spacing	≥0.8mm	
焊盘与贴片间距	Pad to Patch Spacing	≥1.0mm 中心偏移方式 Center Offset Method	
调宽精度	Width adjustment accuracy	±0.2mm	
运输/调宽方式	Transport/width adjustment	链条+转盘&分段运输&统一调宽 Chain+turntable & Segmented transportation & Unified width adjustment	
助焊剂模块 Flux module			
运动形式	Form of movement	XY 平台运动 Platform Motion	
助焊剂储存罐	Flux storage tank	2L - 20L	
定位速度	Location Speed	0-400mm/s	
喷雾速度	Spray speed	0-20mm/s	
喷雾定位精度	Spray positioning accuracy	±0.15mm	
助焊剂种类	Type of flux	免洗型/水基型 Free Wash/Water Based	
助焊剂低液位检测	Low flux level detection	低液位自动报警 Automatic low level alarm	
喷雾驱动方式	Spray driving mode	高频电磁阀 High frequency solenoid valve	
喷雾喷嘴数量	Number of spray nozzles	单喷嘴 Single nozzle	

型号	Model	EIS-450	EIS-610
助焊剂模块 Flux module			
喷雾喷头管大小	The Size of Flux Nozzle Tube	130um	
喷涂宽度	Flux Width	2-8mm	
喷雾工作压力	Working pressure of spray	0.05Mpa-0.1MPa	
预热模块 Preheating Module			
预热有效面积	Preheating effective area	L500*W450mm	L700*W610mm
顶部预热方式	Top preheating method	热风对流 Hot air convection	
顶部热风加热器功率	Top hot air heater power	Max:6KW	Max:8KW
底部预热方式	Bottom preheating method	红外线辐射 Infrared radiation	
底部红外加热器功率	Bottom infrared heater power	Max:13.5kw	Max:18kw
控温方式	Temperature control	PID+SSR/功率模式 Power mode	
温度范围	Temperature range	温室 Greenhouse - 250°C	
焊接模块 Welding Module			
焊接区预热	Welding Zone Preheating	选项 Option	
PCB定位方式	PCB positioning method	机械定位 Mechanical positioning (选项 Option: MARK相机定位 Camera positioning)	
运动形式	Form of movement	XYZ 平台运动 Platform Motion	
波峰驱动方式	Wave crest driving mode	电磁泵 Electromagnetic pump	
锡缸数量	Number of tin cylinders	单焊接模块单缸单头 Single welding module, single cylinder, single head	
焊接喷嘴	Welding nozzle	定制单点高精度喷嘴 Single point high-precision nozzle (选项 Option: 自动清洗喷嘴功能 Automatic cleaning nozzle function)	
喷嘴波峰高度	Nozzle crest height	3-5mm	
喷嘴焊接速度	Nozzle welding speed	2-20mm/s	
平台移动速度	Platform movement speed	X/Y: 2-200mm/s; Z: 2-100mm/s	
平台定位精度	Platform positioning accuracy	±0.15mm	
锡缸加热功率	Heating power of tin cylinder	2KW	
锡缸控温精度	Temperature control accuracy	±2°C	
气体供应要求 Gas Supply Requirements			
氮气压力	Nitrogen pressure	0.5Mpa-0.8Mpa	
氮气压力低报警	Low nitrogen pressure alarm	压力传感器 Pressure sensor	
氮气消耗量	Nitrogen consumption	每个锡缸消耗约 Each tin cylinder consumes about 1.5-2m³/h	
粒子洁净度	Particle cleanliness	≥99.999%	
压缩空气压力	Compressed air pressure	0.5Mpa-0.8Mpa	
空气压力低报警	Low air pressure alarm	压力传感器 Pressure sensor	
消耗量	Consumption	≤10m³/h	
机器排风 Machine Exhaust			
排风管直径	Exhaust duct diameter	φ200mm	
排风管排风量	Exhaust air volume	360-900m³/h (3个) (选项 Option: 排风检测系统 Exhaust air detection system)	
环境温度	Ambient temperature	15-35°C	
噪音等级	Noise level	<60dB(A)	
安全紧急制	Safety emergency system	4Pcs (选项 Option: 安全门防护开关 Safety door protection switch)	

备注: 参数若有更改, 恕不另行通知! The above contents are subject to change without further notice!

NIS系列选择性波峰焊参数

NIS Series Selective Wave Soldering Parameters

型号	Model	NIS-450	NIS-610
外型尺寸	Dimension (L×W×H)	2600×1800×1650mm	3350×1950×1650mm
颜色	Colour	波纹白/菊纹灰 Corrugated White/Chrysanthemum Grey	
PCB运输方向	PCB transportation direction	左向右 Left to Right (选项 Option: 右向左 Right to Left)	
重量	Weight	1500kg	2200kg
控制系统 Control System			
电源	Power Supply	3P5W, 380VAC 50/60Hz	
总功率	Consumption	35KW / 52A	45KW / 68A
控制方式	Control mode	PC+PLC	
PC操作系统	PC Operating System	Windows 10	
远程可视化	Process Visualization	CCD 可视 visibility	
软件语言	Software Language	中英文切换 Switching between Chinese and English	
数据导入	Data Import	支持制程数据上传 Support process data upload (选项 Option: 配置条码枪 configure barcode gun)	
编程方式	Programming Mode	在线/离线编程 Online/offline programming	
编程类型	Programming Type	Gerber; 图像编程 Image programming (选项 Option: 配置编程相机 Configure programmed cameras)	
传输系统 Transmission system			
传送带离地高度	Height of conveyor belt	900±20mm	
PCB运输角度	PCB transportation angle	0°	
传送带速度	Conveyor speed	0.2-10m/min	
托盘/PCB重量	PCB Weight	Max:8kg	
PCB宽度(单轨)	PCB Width (Monorail)	60-450mm	60-610mm
PCB长度	PCB Length	120-500mm	120-700mm
PCB顶部空间	PCB Top Space	Max:120mm	
PCB底部空间	PCB Bottom Space	Max:60mm	
PCB厚度	PCB thickness	0.5-3.0mm	
PCB工艺边	PCB Edge Size	≥4mm	
PCB Pin 脚间距	PCB Pin Pin Spacing	≥0.8mm	
焊盘与贴片间距	Pad to Patch Spacing	≥1.0mm 中心偏移方式 Center Offset Method	
调宽精度	Width adjustment accuracy	±0.2mm	
运输/调宽方式	Transport/width adjustment	全转盘&分段运输&统一调宽 Full turntable & Segmented transportation & Unified width adjustment	
助焊剂模块 Flux module			
运动形式	Form of movement	XY 平台运动 Platform Motion	
助焊剂储存罐	Flux storage tank	2L	
定位速度	Location Speed	0-400mm/s	
喷雾速度	Spray speed	0-20mm/s	
喷雾定位精度	Spray positioning accuracy	±0.15mm	
助焊剂种类	Type of flux	免洗型/水基型 Free Wash/Water Based	
助焊剂低液位检测	Low flux level detection	低液位自动报警 Automatic low level alarm	
喷雾驱动方式	Spray driving mode	高频电磁阀 High frequency solenoid valve	
喷雾喷嘴数量	Number of spray nozzles	单喷嘴 Single nozzle	

型号	Model	NIS-450	NIS-610
助焊剂模块 Flux module			
喷雾喷头管大小	The Size of Flux Nozzle Tube	130um	
喷涂宽度	Flux Width	2-8mm	
喷雾工作压力	Working pressure of spray	0.05Mpa-0.1MPa	
预热模块 Preheating Module			
预热有效面积	Preheating effective area	L500*W450mm	L700*W610mm
顶部预热方式	Top preheating method	热风对流 Hot air convection	
顶部热风加热器功率	Top hot air heater power	Max:6KW	Max:8KW
底部预热方式	Bottom preheating method	红外线辐射 Infrared radiation	
底部红外加热器功率	Bottom infrared heater power	Max:13.5kw	Max:18kw
控温方式	Temperature control	PID+SSR/功率模式 Power mode	
温度范围	Temperature range	温室 Greenhouse - 250°C	
焊接模块 Welding Module			
焊接区预热	Welding Zone Preheating	标配 Standard	
PCB定位方式	PCB positioning method	机械定位 Mechanical positioning (选项 Option: MARK相机定位 Camera positioning)	
运动形式	Form of movement	XYZ 平台运动 Platform Motion	
波峰驱动方式	Wave crest driving mode	电磁泵 Electromagnetic pump	
锡缸数量	Number of tin cylinders	单焊接模块单缸单头 Single welding module, single cylinder, single head	
焊接喷嘴	Welding nozzle	定制单点高精度喷嘴 Single point high-precision nozzle (选项 Option: 自动清洗喷嘴功能 Automatic cleaning nozzle function)	
喷嘴波峰高度	Nozzle crest height	3-5mm	
喷嘴焊接速度	Nozzle welding speed	2-20mm/s	
平台移动速度	Platform movement speed	X/Y: 2-200mm/s; Z: 2-100mm/s	
平台定位精度	Platform positioning accuracy	±0.15mm	
锡缸加热功率	Heating power of tin cylinder	2KW	
锡缸控温精度	Temperature control accuracy	±2°C	
气体供应要求 Gas Supply Requirements			
氮气压力	Nitrogen pressure	0.5Mpa-0.8Mpa	
氮气压力低报警	Low nitrogen pressure alarm	压力传感器 Pressure sensor	
氮气消耗量	Nitrogen consumption	每个锡缸消耗约 Each tin cylinder consumes about 1.5-2m³/h	
粒子洁净度	Particle cleanliness	≥99.999%	
压缩空气压力	Compressed air pressure	0.5Mpa-0.8Mpa	
空气压力低报警	Low air pressure alarm	压力传感器 Pressure sensor	
消耗量	Consumption	≤10m³/h	
机器排风 Machine Exhaust			
排风管直径	Exhaust duct diameter	φ200mm	
排风管排风量	Exhaust air volume	360-900m³/h (3个) (选项 Option: 排风检测系统 Exhaust air detection system)	
环境温度	Ambient temperature	15-35°C	
噪音等级	Noise level	<60dB(A)	
安全紧急制	Safety emergency system	4Pcs (选项 Option: 安全门防护开关 Safety door protection switch)	

备注: 参数若有更改, 恕不另行通知! The above contents are subject to change without further notice!



Smartcell-400



MIS-300/450

产品描述

Practical Device Hardware

焊接自动化

Welding automation

- 双面板元件的焊接实现完全自动化。
- The welding of double-sided panel components is fully automated.

波峰喷口

Crest spout

- 波峰喷口移动速度可调，喷头定位精准，在机监控波峰高度及自动校正功能。
- The movement speed of the wave peak nozzle is adjustable, the nozzle positioning is accurate, and the wave peak height and self frequency correction function are monitored on the machine.

软件升级

Software upgrade

- 无需任何PCB数据，依旧可快速导入数据，且图形编程简易、高效采用选择性喷雾，多种算法相结合，精确控制喷雾过程，保证PCB的清洁，大幅度降低助焊剂的耗量；
- 可离机式编程/Gerber文件导入。
- Without any PCB data, data can still be quickly imported, and the graphic programming is simple and efficient. Selective spray is used. Multiple algorithms are combined to accurately control the spray process, ensure the cleanness of PCB, and greatly reduce the consumption of flux;
- Offline programming/Gerber file import is possible.

迷你选择焊参数

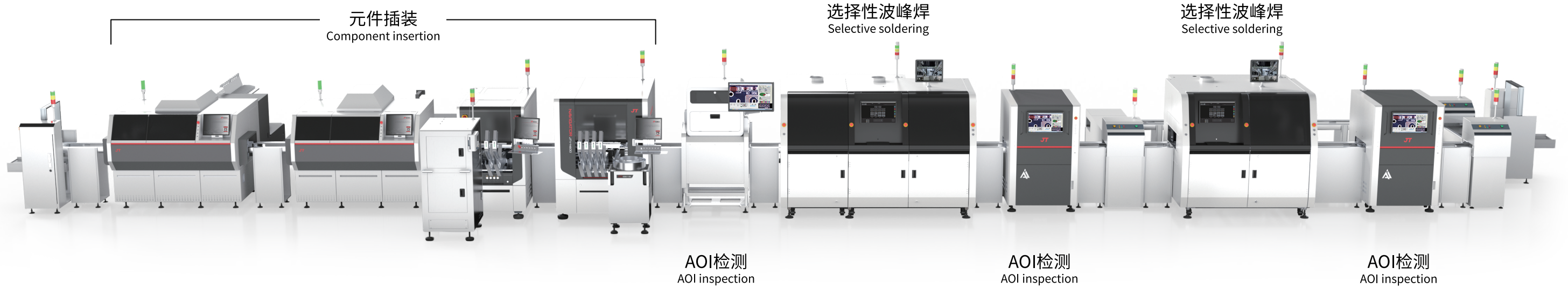
Mini-Selective Soldering Parameters

型号	Model	Smartcell-400	MIS-300	MIS-450
外形尺寸	Dimension (L×W×H)	1650×1800×1650mm	800×1400×1400mm	1000×1550×1400mm
PCB 宽度	PCB Width	60-400 mm	60-300 mm	60-450 mm
PCB 长度	PCB Length	120-400 mm	120-330 mm	120-530 mm
PCB顶部空间	PCB Top Side Clearance	Max.120 mm		
PCB底部空间	PCB Bottom Side Clearance	Min.50 mm	Min.30 mm	
PCB工艺边尺寸	PCB Edge Clearance	4 mm		
PCB运输高度	Conveyor Height	900±20		
PCB运输速度	Conveying speed	0.2-10M/min		
托盘/PCB重量	Pallet/PCB weight	Max:5kg		
助焊剂储存罐	Flux Capacity	2L		
喷雾喷头管口大小	The Size of Flux Nozzle Tube	130μm(双喷雾头选配) (Double Nozzle is option)	130μm	130μm(双喷雾头选配) (Double Nozzle is option)
喷涂宽度	Flux Width	2-8mm		
底部动态红外加热器	Bottom Dynamic Infrared Heater	Max:9KW	—	
温度范围	Temperature Range	室温 R T~250°C	—	
顶部热风加热器	Top Air Heater	Max:6KW	—	
控精度	Temp. Control Accuracy	±5°C	—	
最小喷嘴直径	Min Diameter of Solder Nozzle	φ2.5/4		
波峰高度	Wave Height	Max.5mm		
锡炉容量	Solder Pot Capacity	8KG/pot		
焊接温度	Soldering Temperature	Max:350°C		
加热时间	Heating Time	40min / (300°C)		
锡炉加热功率	Pot Heating Power	1KW / 单缸 Single pot		
定位速度	Location Speed	X / Y : 2-200mm/s Z : 2-50mm/s		
焊接精度	Soldering Accuracy	±0.5mm		
PC操作系统	PC Operating System	Windows 10		
远程可视化	Process Visualization	CCD 可视 Visual		
软件语言	Software Language	中英文可切换 Chinese and English Changeable		
数据导入	Data Import	Gerber、图像导入 Image Import		
编程方式	Programming Mode	在线/离线编程 Inline/Offline Programming		
电源&频率	Power Supply	AC,380V 3Φ5W 50/60Hz		
总功耗	Consumption	22KW	4.5KW	
排风管直径	Air Duct Diameter	φ200mm		φ150mm
排风管风量	Exhaust Air Rate	360 M ³ /h		
所需压力	Pressure	0.4-0.8 Mpa		
氮气消耗量	N ₂ Consumption	每个锡缸消耗约 Each onsumes about 1.5~2 M ³ / h		
N ₂ 浓度	Concentration	≥99.999%		

备注:参数若有更改,恕不另行通知! The above contents are subject to change without further notice!

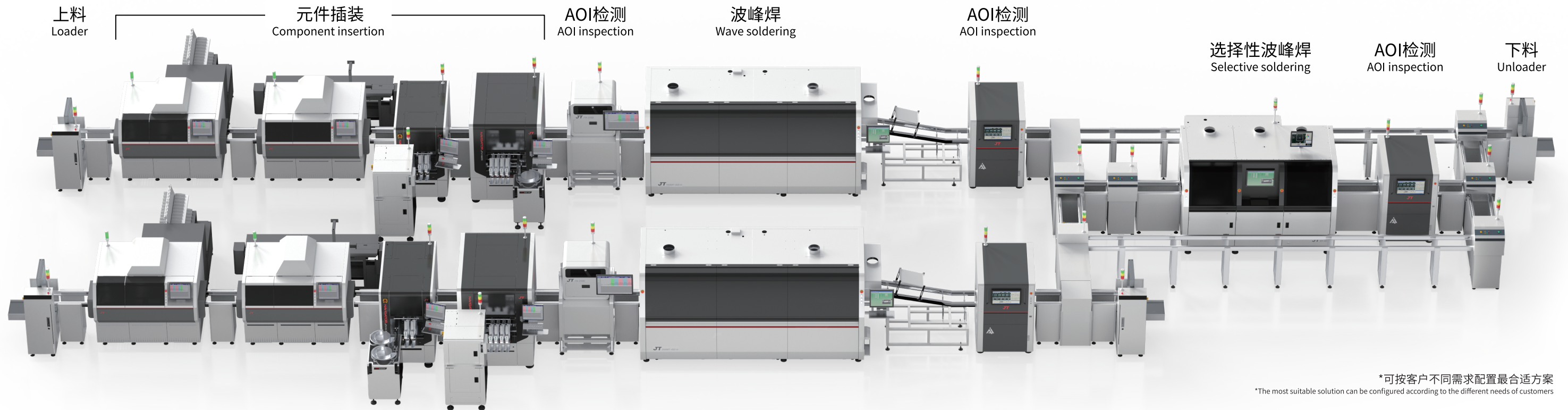
自动修补整线

Automatic repair of the entire line



THT智能解决方案

THT Smart Solutions



*可按客户不同需求配置最合适方案
*The most suitable solution can be configured according to the different needs of customers